



6 Tamarama Drive Kingscliff NSW

4 🚗 3 🚗 2 🚗

This beautiful home certainly captured the attention of buyers the first time & now we are on the market again! The current owners are relocating after loving the home very much and adding further value with some stylish updates.

This private home will certainly impress you upon entry! Originally a builders own home, where little expense was spared on bespoke details to create a breathtaking family home.

- * Coffered entry ceilings
- * Tall ceilings and wide staircase/passages
- * French doors and so much more to create a beachy, modern, yet elegant feel

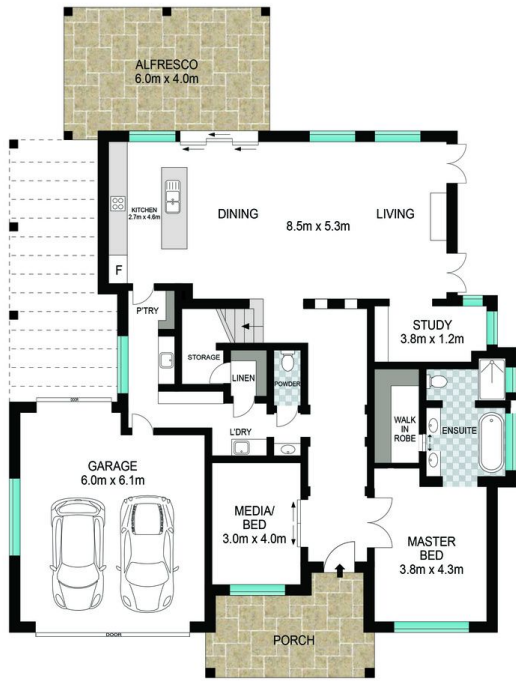
The location is LIFESTYLE PERFECT - a two-minute stroll to the Salt Village with restaurant & shopping precinct + patrolled beaches, Salt Surf life-saving club and Salt pub. Or stroll to the end of the street for direct access to our beautiful ocean inlet creek for kayaking or SUP.

Additional Features at a glance...

Price : \$ 1,590,000
Building Size : 275 sqm
Land Size : 540 sqm
View : <https://www.lsproperties.com.au/sale/nsw/northern-rivers/kingscliff/residential/home/5929573>



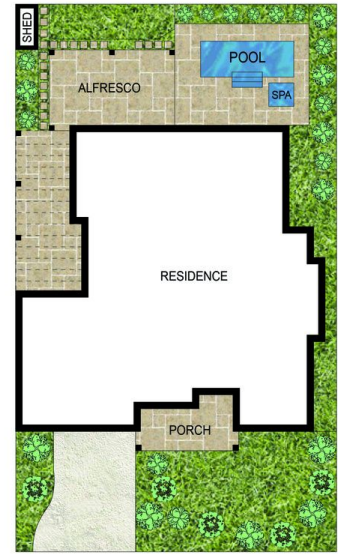
Lorna Savage
1300 067 177



GROUND FLOOR



UPPER FLOOR



SITE PLAN



Scale in metres. Indicative only. Dimensions are approximate. All information contained herein is gathered from sources we believe to be reliable. However, we cannot guarantee its accuracy and interested persons should rely on their own enquiries.

INT: 275 m²
EXT: 52 m²

6 Tamarama Drive, Kingscliff

