



**4 Sailfish Way Kingscliff NSW**

4 🏠 2 🚗 2 🚗

Designed with superb attention to detail and meticulously built by award winning master builder Matt Sands.

The owners brief was for a beach home to be filled with abundant northern light and able to catch the cooling summer breeze. They also wanted a low maintenance, bespoke finished home with a superb kitchen. This has certainly been achieved together with the most fabulous location! In all seasons this home has various spots to enjoy the sun, whilst offering shelter when needed on those warmer summer days.

The neutral coastal palette fits beautifully with this enviable beach close location. All joinery is off white with two-pack finish, top of the line Blum self-closing drawers, and the stone bench tops throughout the home are solid 30mm thick.

The private, fully enclosed garden is low maintenance with space for a smaller pool if required. There are covered outdoor areas on both sides of the home, making it extremely practical and able to accomodate a crowd with ease.

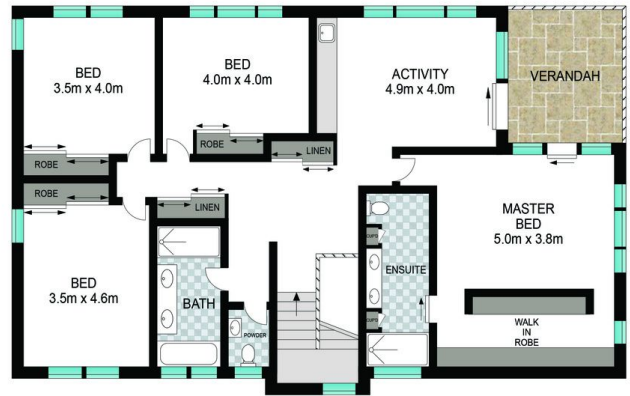
**Price** : \$ 1,305,000  
**Building Size** : 354 sqm  
**Land Size** : 367 sqm  
**View** : <https://www.lsproperties.com.au/sale/nsw/northern-rivers/kingscliff/residential/home/5929558>



**Lorna Savage**  
**1300 067 177**



LOWER FLOOR



UPPER FLOOR



Scale in metres. Indicative only. Dimensions are approximate. All information contained herein is gathered from sources we believe to be reliable. However, we cannot guarantee its accuracy and interested persons should rely on their own enquiries.

INT: 309 m<sup>2</sup>  
EXT: 42 m<sup>2</sup>



4 Sailfish Way, Kingscliff

**LS** PROPERTIES