



2/24 Elanora Avenue Pottsville NSW

3 2 2

Located on one of the Tweed Coast's most sought after streets. As you drive along this tightly held beachfront strip, what becomes apparent is the number of newly finished architectural homes. Prestige has now arrived at the traditional "buckets and spades" lifestyle that Pottsville is known for.

On offer, is the ultimate turn key beachside getaway, purposefully designed with this in mind!

Built by local boutique company Berecon, and architecturally designed by Rachael Norman. Over 6 months of collaborative planning went into creating this mid-century, modernist home. A vision driven by style and sustainability!

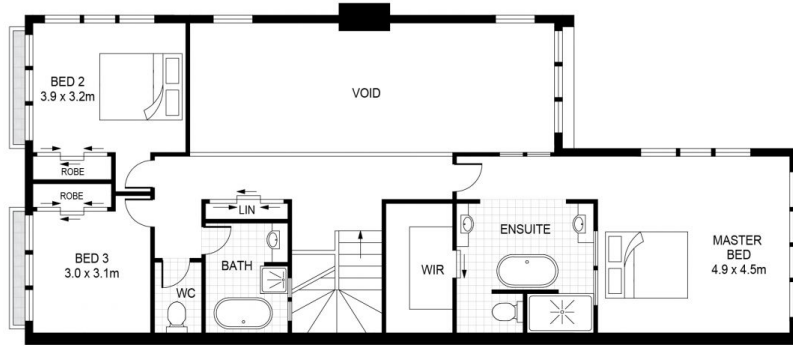
Impressive from the outset with the butterfly roof, timber framing and block work. As you enter the gate, you're greeted by a private sunny courtyard and plunge pool. This leads to an intimate front door entrance and only as you peer around the corner do you start to truly admire the double story void throughout the living area. Capturing an abundance of NE light and airflow. Luxury touches include

Price : \$ 1,350,000

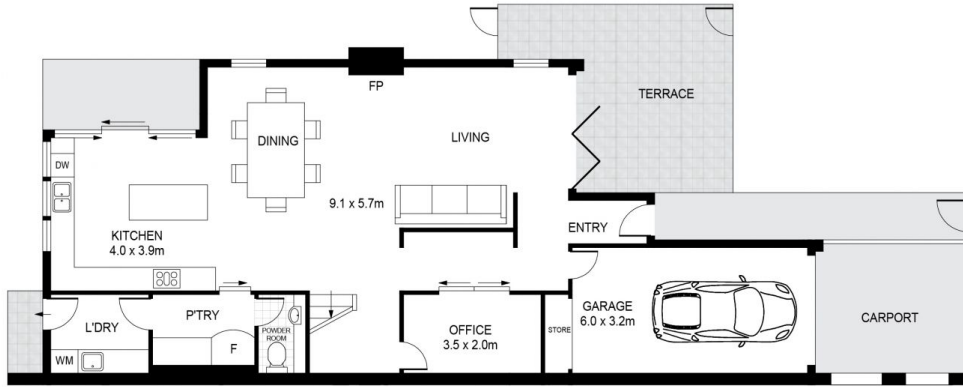
View : <https://www.lsproperties.com.au/sale/nsw/northern-rivers/pottsville/residential/semi-detached/5929426>



Brent Savage
0477 122 559



FIRST FLOOR



GROUND FLOOR



Internal: 218m²
 Excludes all external structures
 Eg: decks, patios, verandahs etc



2/24 Elanora Avenue, Pottsville

Scale in metres. Indicative only. All information contained herein is obtained from sources we believe to be accurate. We cannot guarantee its accuracy. Interested persons should make and rely on their own enquiries