



21 Longboard Circuit KINGSCLIFF NSW

4 3 2

This Scott Carpenter designed dual entry beach house is located on a corner allotment with north facing alfresco living spilling out to the landscaped pool area. There is definitely room for a boat or caravan off street.

View : <https://www.lsproperties.com.au/sale/nsw/northern-rivers/kingscliff/residential/house/5929290>

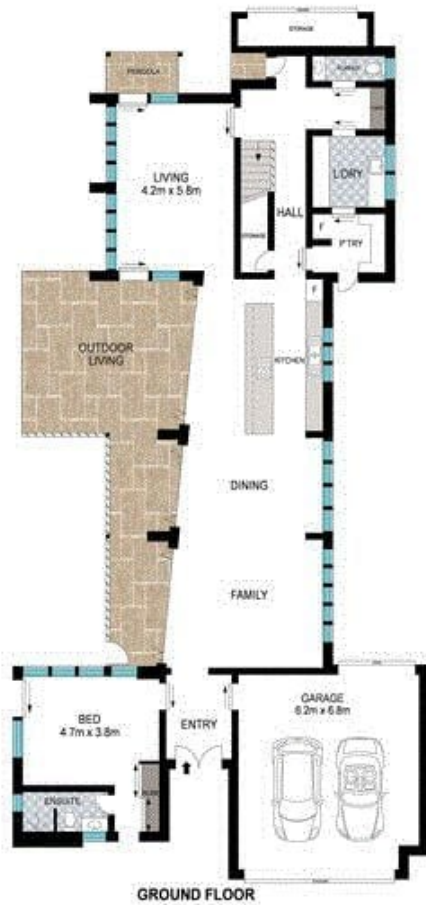
The kitchen precinct is perfectly located for the entertainers to join in the family fun with all living space adjoining the oversized preparation benches.

The two separate living precincts are abundant with natural light and cross flow ventilation.

This home offers choices of master bedroom with ensuite on the ground level or on the second level. There are a total of 3 bedrooms upstairs and a well designed two way bathroom between the two childrens bedrooms.

Located creekside at Salt Village you are a few steps away from the extensive walking & bike tracks leading to the Saltbar Bistro & restaurant/cafes at Salt.

Salt Village is located in South Kingscliff and a 15 minute drive from the Gold Coast International Airport.



GROUND FLOOR



FIRST FLOOR



SITE PLAN (NOT TO SCALE)

INT: 242 m²
EXT: 650 m²



Scale in metres. Indicative only. Dimensions are approximate. All information contained herein is gathered from sources we believe to be reliable. However, we cannot guarantee its accuracy and interested persons should rely on their own enquiries.

21 Longboard Circuit, Kingscliff