



17 Elanora Avenue Pottsville NSW

4 🚗 3 🚗 2 🚗

Welcome to Wyuna ~ Beachfront home 'by clear water'

- * Quintessential Beach House with prestige beachfront location
- * 180 degree ocean and waterway vistas to Byron Bay
- * 705m2 block, elevated 10m above sea level on granite finger
- * Potential to go up another level (9M Height Limit)
- * Separate, self contained guest accommodation
- * 500m from Pottsville village, cafes and restaurants
- * Patrolled surf beach directly in front (During Peak Holiday Season)
- * 25 minutes to Gold Coast Airport and 30 minutes to Byron Bay

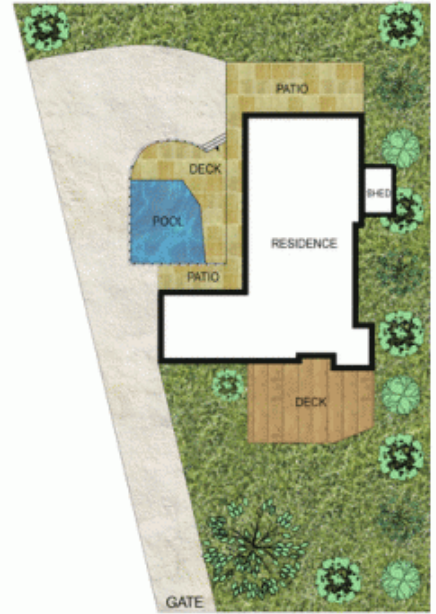
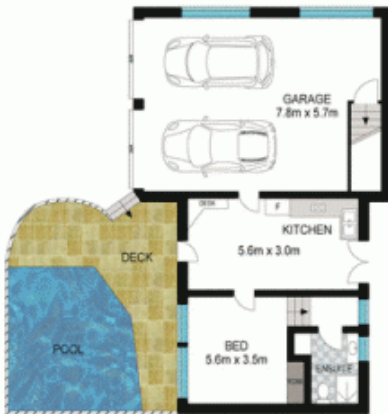
Rare opportunity to secure an iconic property on the Tweed Coast. Situated on the top of Elanora Avenue with the beachfront on one side and the Mooball Creek on the other! This tightly held beach house is on offer for the first time in almost 40 years.

Views are forever, encompassing the hinterland, waterway, ocean and Byron Bay Lighthouse. There is a

Price : \$ 2,895,000
Land Size : 705 sqm
View : <https://www.lsproperties.com.au/sale/nsw/northern-rivers/pottsville/residential/house/5929230>



Brent Savage
0477 122 559



Scale in meters. Indicative only. Dimensions are approximate. All information contained herein is gathered from sources we believe to be reliable. However, we cannot guarantee its accuracy and interested persons should rely on their own enquiries.

INT: 237 m²
EXT: 705 m²

17 Elanora Ave Pottsville